

Jewellery found with
the body of Sumerian
Queen Puabí in Ur
c. 2600 BC

Penn Museum, Philadelphia, USA



Between 1922 and 1934, Leonard Woolley embarked on an excavation mission at the historical Sumerian city of Ur. During this extensive period of exploration, he unearthed a treasure trove of insights into the lives of the city's ancient inhabitants. Within the approximately 1,800 graves dating back to around 2600 BC, Woolley stumbled upon 16 tombs of exceptional significance, brimming with precious and unique artifacts. These remarkable burial sites, aptly named the 'Royal Tombs,' captured the attention of global audiences, igniting widespread curiosity and amazement. Amongst them the resplendent Tomb of an important woman, called... Puabí



Ancient Sumer in Mesopotamia 3500-2332 BC

The region of southern Mesopotamia is known as Sumer, and it is in Sumer that we find some of the oldest known cities, including Ur where between 1922 and 1934, Leonard Woolley discovered the 'Royal Tombs.'

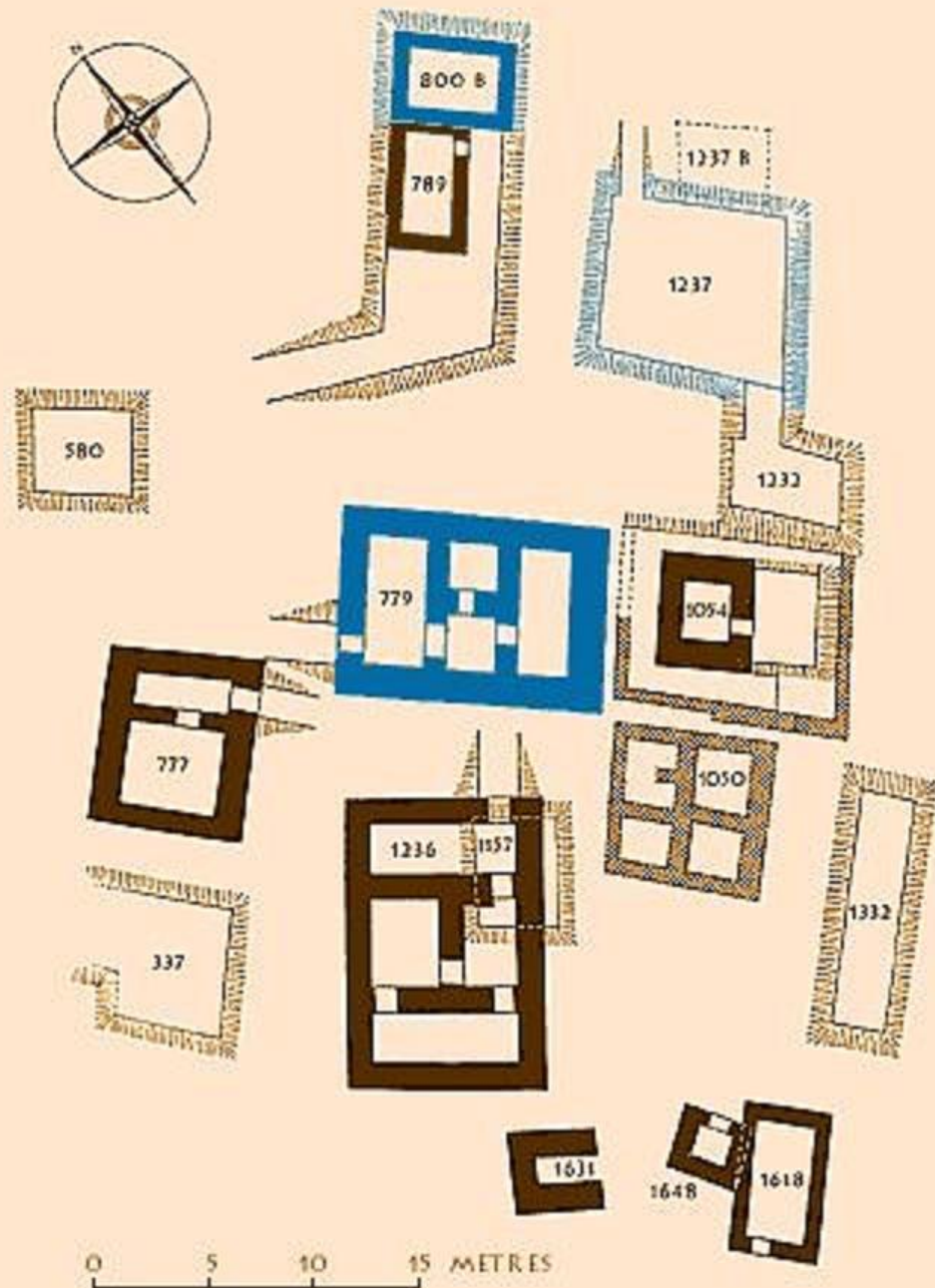
<https://timemaps.com/history/iraq-2500bc/>



Excavations
Photograph of
the Royal
Cemetery of Ur

Leonard
Woolley, the
explorer of the
Royal Tombs

https://en.wikipedia.org/wiki/Royal_Cemetery_at_Ur and
<http://sumerianshakespeare.com/117701/117801.html>



Plan of the Royal Tombs and Death Pits Puabi's Tomb is marked as Grave 800

<http://sumerianshakespeare.com/media/9e52fba4c8055a72ffff819ffffe415.jpg/>



Puabi's Formal Attire,
c. 2600-245 BC, Penn
Museum, Philadelphia,
USA

<https://www.penn.museum/collections/highlights/neareast/puabi.php>





Head Ornaments, c. 2600-245
BC, gold, Penn Museum,
Philadelphia, USA

<https://www.penn.museum/collections/highlights/neareast/puabi.php>

<https://www.penn.museum/collections/highlights/neareast/puabi.php>



Ribbon, c. 2600-245 BC, gold, lapis-lazuli, carnelian,
Penn Museum, Philadelphia, USA

<https://www.penn.museum/collections/highlights/neareast/puabi.php>



String of Beads and Rosette, c. 2600-245 BC, gold and lapis-lazuli, Penn Museum, Philadelphia, USA

Frontlet, , c. 2600-245 BC, gold, lapis-lazuli, carnelian, Penn Museum, Philadelphia, USA

<https://www.penn.museum/collections/highlights/neareast/puabi.php>





https://www.penn.museum/collections/object_images.php?irn=38475#image1



Wreath, c. 2600-245 BC, gold, lapis-lazuli,
shell, carnelian, Penn Museum, Philadelphia,
USA

<https://www.penn.museum/collections/highlights/neareast/puabi.php>



Wreath, c. 2600-245 BC, gold,
lapis-lazuli, carnelian, Penn
Museum, Philadelphia, USA

[https://www.penn.museum/collections/highlights/neareast/
/puabi.php](https://www.penn.museum/collections/highlights/neareast/puabi.php)

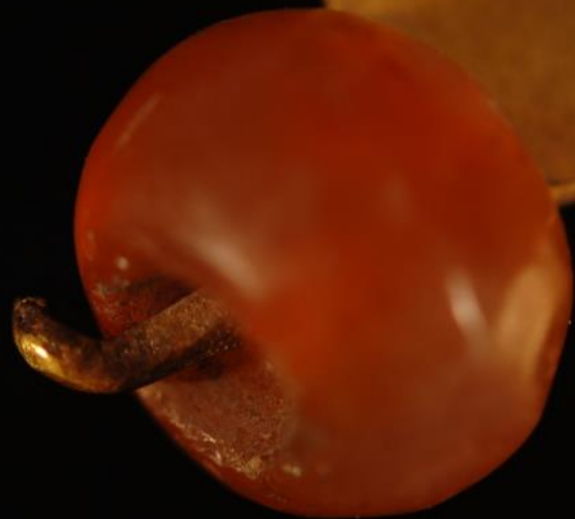




Wreath, c. 2600-245 BC, gold, lapis-
lazuli, carnelian, Penn Museum,
Philadelphia, USA

<https://www.penn.museum/collections/highlights/neareast/puabi.php>







Hair Comb, c. 2600-245 BC, gold, lapis-lazuli, carnelian, Penn Museum, Philadelphia, USA

<https://www.penn.museum/collections/highlights/ncareast/puabi.php>







Earrings, c. 2600-245
BC, gold, Penn
Museum, Philadelphia,
USA

<https://www.penn.museum/collections/highlights/neareast/puabi.php>

Jewellery found
with the body of
Queen Puabi
herself, c. 2600-
245 BC

[https://www.penn.museum/collections/
highlights/ncareast/puabi.php](https://www.penn.museum/collections/highlights/ncareast/puabi.php)



Jewellery found with
the body of Sumerian
Queen Puabí in Ur
c. 2600 BC
British Museum, UK



Cylinder Seal, c. 2600-
245 BC, lapis-lazuli,
British Museum, London,
UK

https://www.britishmuseum.org/collection/object/W_1928-1010-235

Cylinder Seal, c. 2600-245 BC, lapis-lazuli, British Museum, London, UK
<https://www.britishmuseum.org/collection/term/BLOG62748>



The image displays four ancient amulets against a light blue background. At the top center is a gold bull amulet with prominent horns. Below it, on the left, is a gold fish amulet with a textured, scale-like pattern. To the right of the first fish is another gold fish amulet, also with a textured pattern. At the bottom center is a smaller, darker amulet, likely lapis-lazuli, shaped like a fish with a more granular texture.

Amulets, c. 2600-245
BC, gold, lapis-lazuli,
British Museum, London,
UK

<https://www.britishmuseum.org/collection/term/BL0G62748>

Head-Dress, c. 2600-245 BC, agate, lapis-lazuli,
British Museum, London, UK

<https://www.britishmuseum.org/collection/term/BIOG62748>



Belt(?), c. 2600-245 BC, lapis-
lazuli, British Museum, London,
UK

<https://www.britishmuseum.org/collection/term/BLOG62748>



Fastener, Finger Rings, Head-Dress Rings, c. 2600-245
BC, Gold, lapis-lazuli, British Museum, London, UK

<https://www.britishmuseum.org/collection/term/BLOG62748>



The End