

*Morris, Marshall, Faulkner & Co.,  
1861–1875*

*Overmantel decorated with tiles,  
Installed in 1864*

*Old Hall, Queen's College, Cambridge, UK*

<https://www.queens.cam.ac.uk/visiting-the-college/history/college-facts/the-buildings/morris-co-tiles>





*Old Hall,  
Queen's  
College,  
Cambridge,  
UK  
Left: Hall's  
1861-4  
Fireplace and  
the 1864 Tile  
Overmantle  
by Morris,  
Marshall,  
Faulkner &  
Co. to the  
designs of  
Burne-Jones,  
Morris,  
Madox  
Brown, and  
Rossetti*

<https://www.queens.cam.ac.uk/visiting-the-college/history/college-facts/the-buildings/old-court-history>



## *Old Hall, Queen's College, Cambridge, UK* *The Hall's Fireplace* <https://www.flickr.com/photos/costi-londra/2676523596>

*New, 1861–4, Fireplace designed by the architect G.F. Bodley, of alabaster and tiles. The decoration includes the red rose of the House of Lancaster, the white rose of the House of York, and the college's motto: Floreat Domus*

*Philip Webb designed eleven coats of arms, painted above the fireplace, of founders, foundresses, and benefactors* <https://www.queens.cam.ac.uk/visiting-the-college/history/college-facts/the-buildings/old-hall-chronology>

*The 1864 Tile Overmantle by Morris, Marshall, Faulkner & Co. to the designs of Burne-Jones, Morris, Madox Brown, and Rossetti*

*1875: A carved and moulded wood canopy to Bodley's design was made by Cambridge firm Rattee & Kett and added above the Morris tiles of 1864* <https://www.queens.cam.ac.uk/visiting-the-college/history/college-facts/the-buildings/old-hall-chronology>



## Key to the Heraldry above the Fireplace



Sir John Wenlock	Marmaduke Lumley Bishop of Carlisle Bishop of Lincoln	William Booth Bishop of Lichfield Archbishop of York	Richard III	Henry VI and Margaret of Anjou	Andrew Dokett	Edward IV and Elizabeth Woodville	Sir Thomas Smith	Anthony Sparrow President Bishop of Exeter Bishop of Norwich	George Harry Grey 5th Earl of Stamford	Robert Moon Fellow
Laid foundation stone	Benefactor	Benefactor	Benefactor	Foundress	Founding president	Foundress	Benefactor	Benefactor	Benefactor	Benefactor

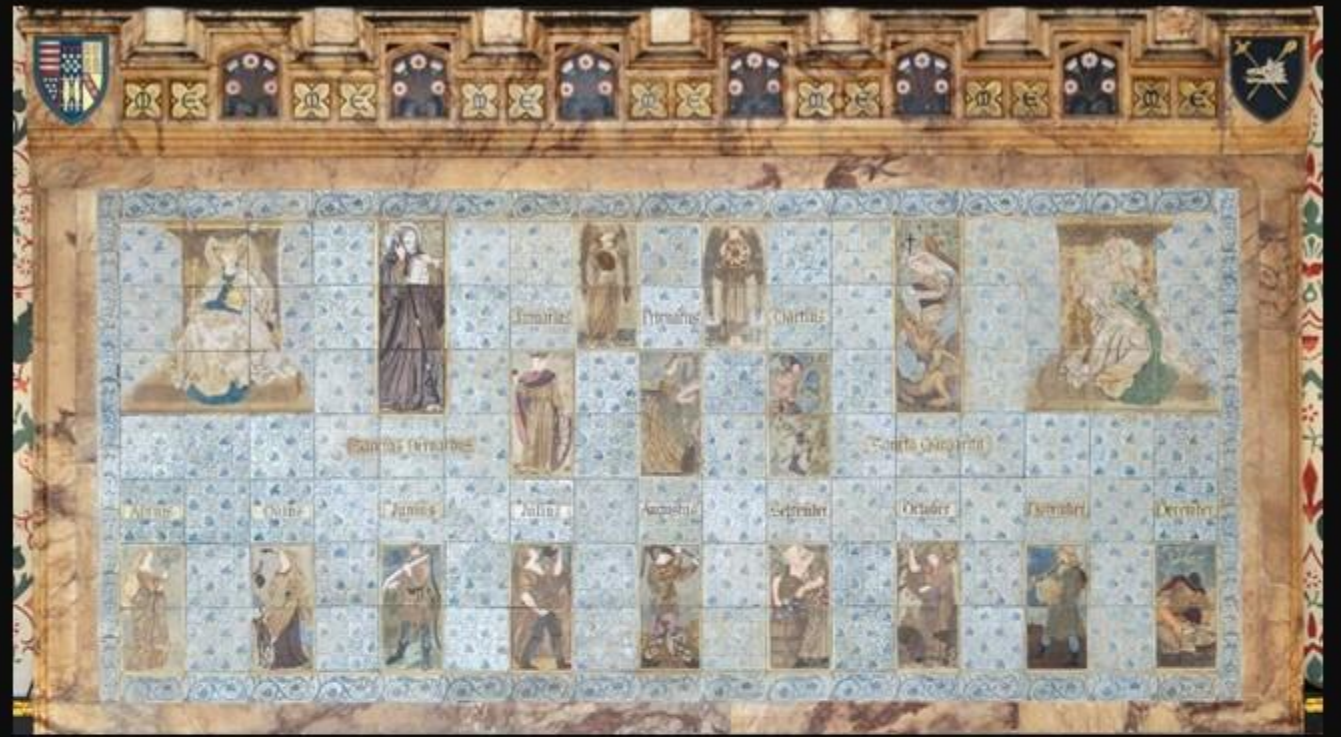


*Overmantel decorated with tiles painted by Morris, Marshall, Faulkner & Co., depicting the two foundress queens, the two patron saints, the Angel of Night, the Angel of Day, and a Labour of the Month for each of the twelve months, Installed in 1864, modified in 1873, in 1875, a wooden canopy was added over the panel of tiles, the fireplace in Old Hall, Queen's College, Cambridge, UK*





**Key to the tiles over the  
fireplace, the fireplace in  
Old Hall, Queen's College,  
Cambridge, UK**



Margaret of Anjou					Jan.	Angel of Night		Angel of Day	Mar.				Elizabeth Woodville			
		St Bernard								St Margaret						
Apr.		May		June		July		Aug.		Sep.		Oct.		Nov.		Dec.



*Left: Margaret of Anjou as Queen, recognisable by the daisies (marguerites) in her dress  
Right: Elizabeth Woodville as Queen, recognized by her costume and jewellery are modelled on  
those in the much-copied portrait*

*Both tiles were designed by Ford Madox Brown in 1873, and added to the earlier tiles*

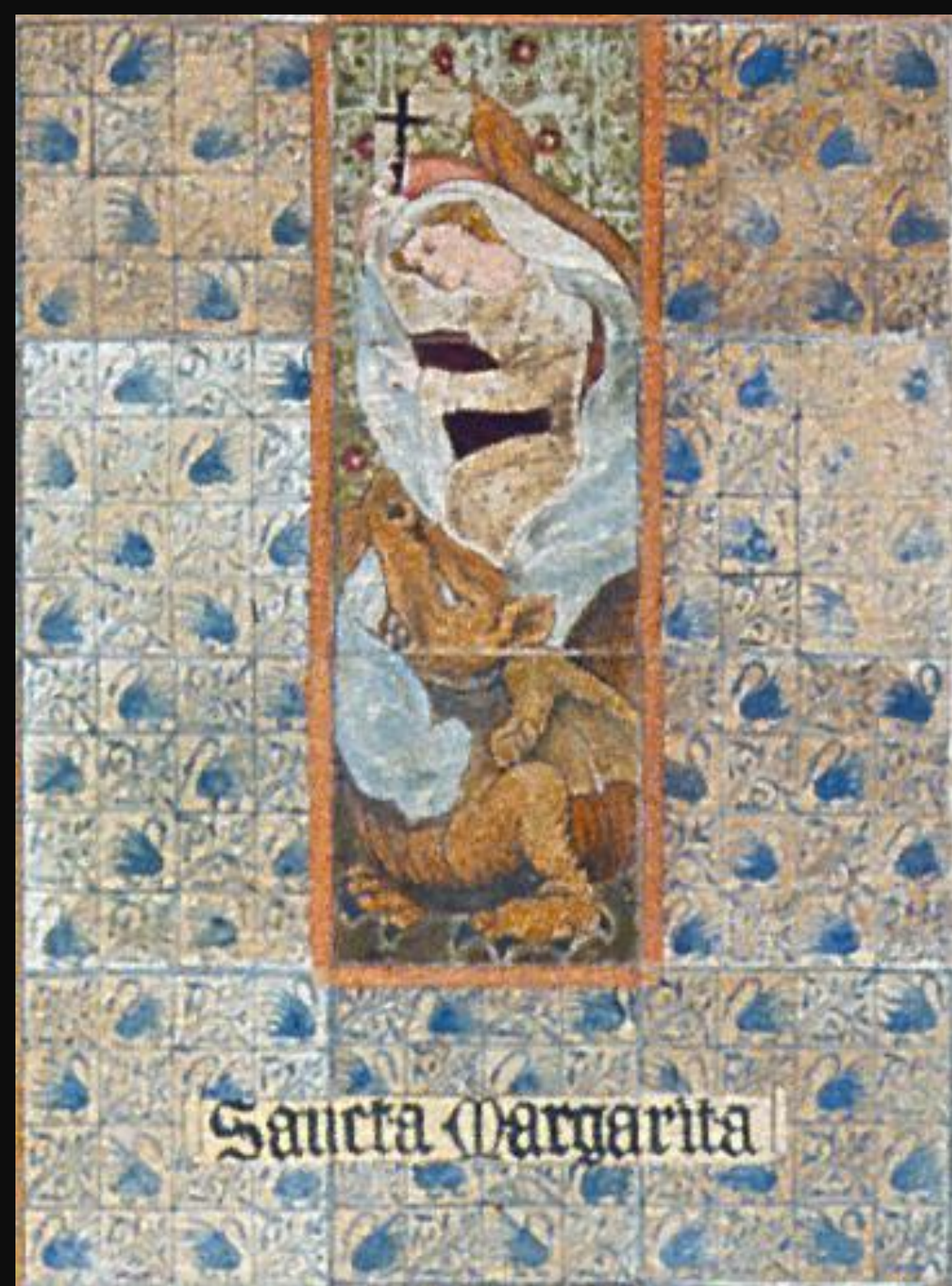




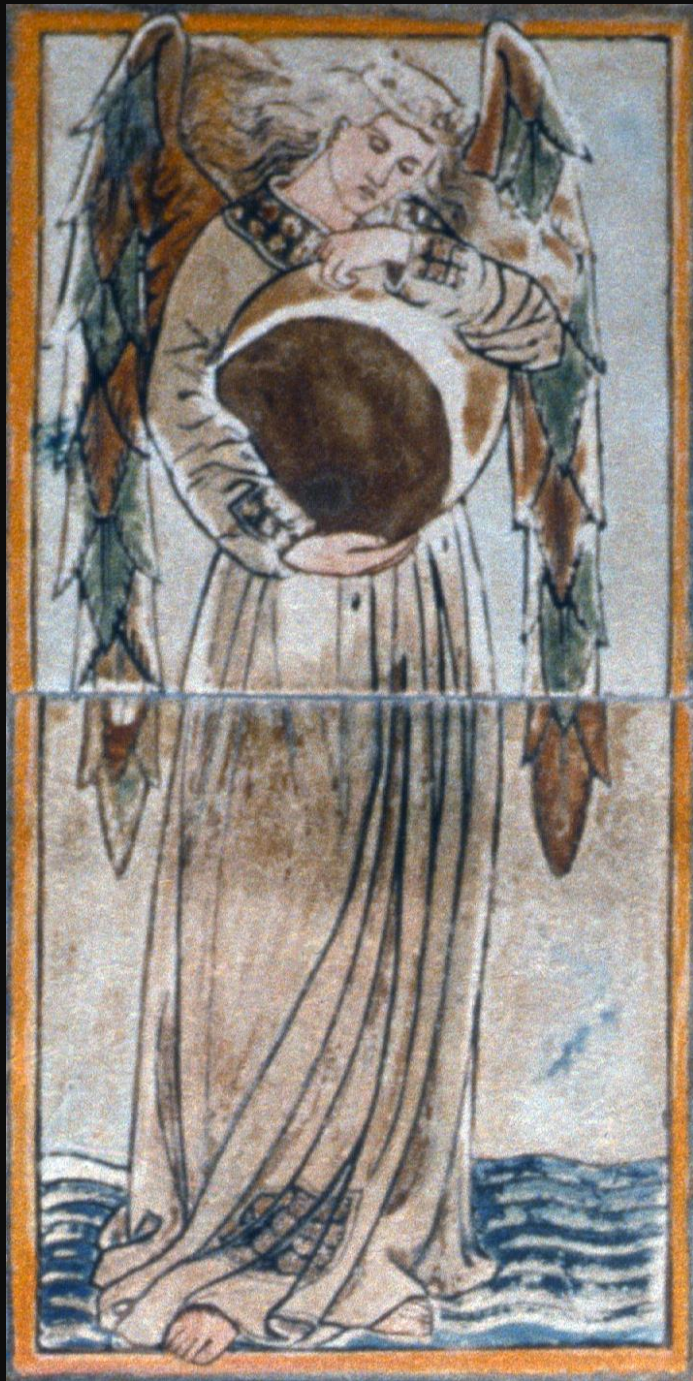


*Left:  
St Bernard,  
designed by  
Burne-Jones*

*Right:  
St Margaret,  
designed by  
Rossetti*







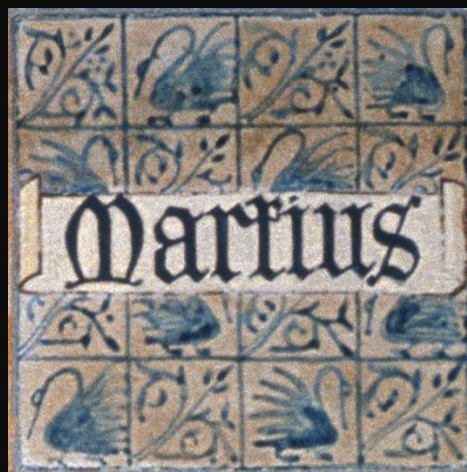
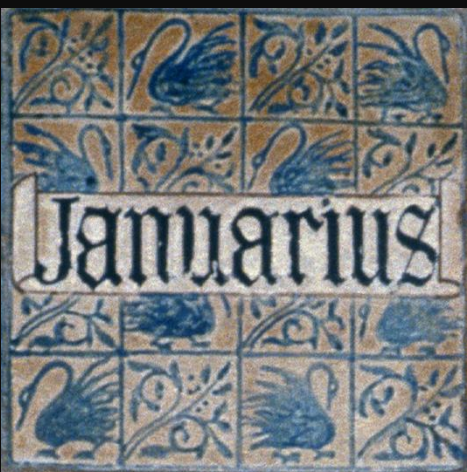
*Left: Angel of Night*

*Right: Angel of Day*

*Both designed by Morris*







*January is personified by the two-headed god Janus: the old head looks back to the old year, and the young head looks forward to the new year*

*February is personified by a young woman reads a Valentine card while warming herself in front of a fire, accompanied by a black cat*

*March is personified by a man sitting on a tree branch and pruning a tree with a white owl present in a hole in the tree*

*Left: January, designed possibly by Burne-Jones, or possibly by Morris  
Center: February, designed possibly by Burne-Jones*

*Right: March, designed by Ford Madox Brown*



*Aprilis*

*April is personified by a woman walking in a meadow of flowers, wearing a wreath of leaves, and holding a branch*

*May is personified by a woman holding a falcon, accompanied by a dog*

*June is personified by a man sharpening his scythe with a stone*

*Left: April, designed by Morris*

*Center: May, designed by Ford Madox Brown*

*Right: June, designed by Morris*

*Maius*

*Junius*





July



Augustus



*July is personified by a man walking  
in a field of wheat, drinking water*

*Augustus is personified by a man  
threshing wheat*

*September is personified by a woman  
'Vintaging', pouring a bucket of new-  
picked grapes into a barrel*

*Left: July, designed by Morris or by  
Rossetti*

*Center: August, designed by Rossetti*

*Right: September, designed by Rossetti*

September





*October is personified by a woman  
feeding pigs*

*November is personified by a man seed  
sowing in a field*

*December is personified by a man  
slaughtering a pig*

*Left: October, designed by Burne-  
Jones*

*Center: November, designed by Ford  
Madox Brown*

*Right: December, designed by Ford  
Madox Brown or by Rossetti*





*The End*